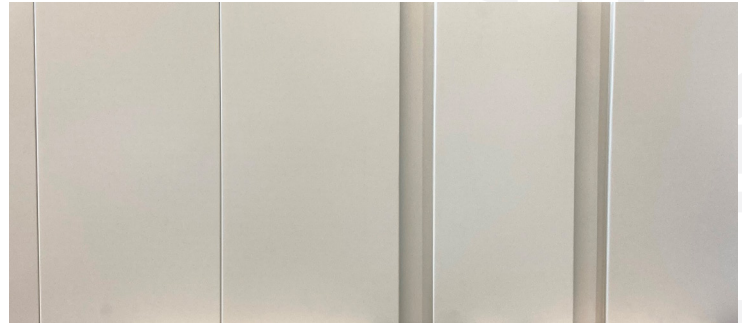


TECHNICAL SHEET METALLIC MURAL CLADDING



DESCRIPTION

Contemporary metal wall cladding system. The wall cladding is seamlessly profiled with no visible fasteners in three different profile choices. Available as a flat panel (no groove) or with a center groove.



PROFILED

- VAD-300
- VAD-400
- VAD-500

Dimensions in millimeters

- VAD-R-300
- VAD-R-400
- VAD-R-500

Dimensions en millimètres

- VAD-U-260
- VAD-U-360
- VAD-U-460

Dimensions in millimeters

- VAD-U-R-260
- VAD-U-R-360
- VAD-U-R-460

Dimensions in millimeters

JOINTS

CLOSED

CLOSED

OPEN

OPEN

TECHNICAL SHEET

METALLIC MURAL CLADDING



APPLICATION

Each wall cladding panel is installed in a vertical position and anchored with appropriate 25 mm (1 in.) screws at distances ranging from 600 to 1200 mm (24 to 48 in.), adapted to the framing configuration and specific needs of its location. The longitudinal sides of the panel have a continuous fastening apron with a female section and an integrated insertion tongue (male section). This panel is installed on exterior walls and also as a fascia and soffit finish (solid or ventilated).

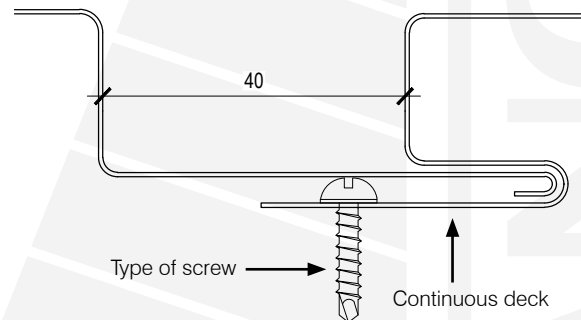
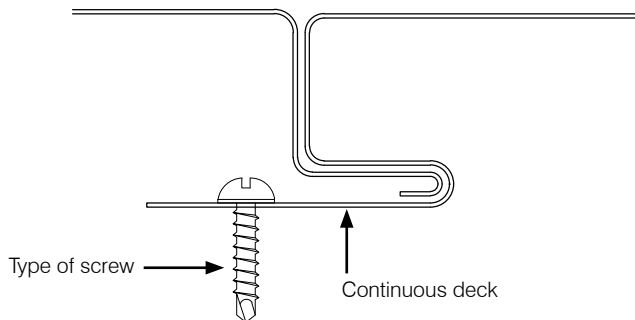
MATERIALS

Wall cladding panel made of :

- ♦ Galvanized, Galvalume® or prepainted steel: 22, 24 or 26 gauge.
- ♦ pre-painted steel: 25 gauge (0.556 mm or 0.0219 in.), specially formulated for Vaillancourt, density 33000 psi.
- ♦ copper: 16 oz or 20 oz.

FIXTURE

- ♦ Hidden fastener design.
- ♦ Screw recommended by Vaillancourt for this type of application: self-tapping, 25 mm (1 in.) long, galvanized steel #10 (4.72 mm or 0.186 in.) with a low-profile pancake head of 11 mm (0.435 in.) diameter. 11 mm (0.435 in.) diameter pancake head.

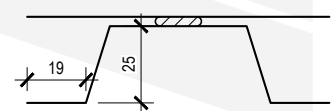
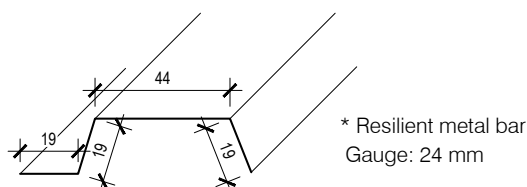


INSTALLATION

The wall covering must be installed vertically on a solid substrate attached to the exterior wall structure. Panels are interlocked with each other by a male/female joint system. Panels can be anchored to plywood (min. 12.7 mm thick), wood or metal furring and «Z» bars.

For a guaranteed wall system, Vaillancourt requires that:

- 1- The installation of the wall covering is anchored on intermediate resilient metal bars. These resilient bars ensure a perfectly flat and uniform surface finish.
- 2- The back of VAD-400, VAD-500, VAD-U-360 and VAD-U-460 panels should be pressed and adhered against an Omega furring placed parallel to the panel to eliminate the tumbling effect.



Continuous acoustic mastic cord

* Provided by Vaillancourt

TECHNICAL SHEET

METALLIC MURAL CLADDING



DIMENSIONS

Width : The panels can be manufactured in three different widths:

- ◆ 300 mm (11¾ in.)
- ◆ 400 mm (15¾ in.)
- ◆ 500 mm (19¾ in.)

Length : For the length, no limit is imposed, because the panels can be profiled and manufactured on site (at the construction site) to an unlimited length, thus without joint between the panels.

STANDARDS

Galvanized Steel: ASTM A525, coating designation Z275 (G90)

Galvalume® Steel: ASTM A792 or A792M, coating designation AZM150 (AZ50) or AZ180 (AZ60)

COLOR

The cladding is available in the standard color chart of the Perspectra Plus MD series (Arcelor Mittal Dofasco).

Other Vaillancourt textured colors specific to wall covering :

- ◆ VAT-3005, Wine Red, textured matte
- ◆ VAT-3009, Oxide Red, textured matte
- ◆ VAT-7024, Charcoal Gray, textured matte
- ◆ VAT-8004, Terracotta, textured matte
- ◆ VAT-8017, Chocolate Brown, textured matte
- ◆ VAT-8019, Mocha Brown, textured matte
- ◆ VAT-9005, Black, textured matte
- ◆ VAT-11108, Pure White, textured matte
- ◆ VAT-60035, Graphite Gray, textured
- ◆ QC-7500, Silver

Non-standard colors as well as CoolR Environmentally Smart Colors and Metallic Series colors are subject to minimum quantities and delivery times.

BENEFITS

1. Seamless system, no visible screws or fasteners, no perforations.
2. Can be arranged in different widths.
3. Does not require maintenance.

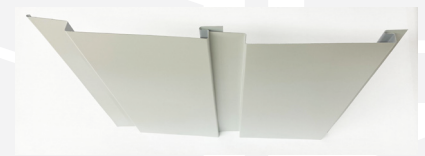
WARRANTY

Installation : 10 years (when installed according to specifications and site supervision by Vaillancourt).

Materials : 40 years.

WARNING

If installed horizontally, the panel may buckle and water drainage will be less efficient, which may increase the risk of corrosion.



TECHNICAL SHEET METALLIC MURAL CLADDING



OPTION: VENTILATED SOFFIT

DESCRIPTION

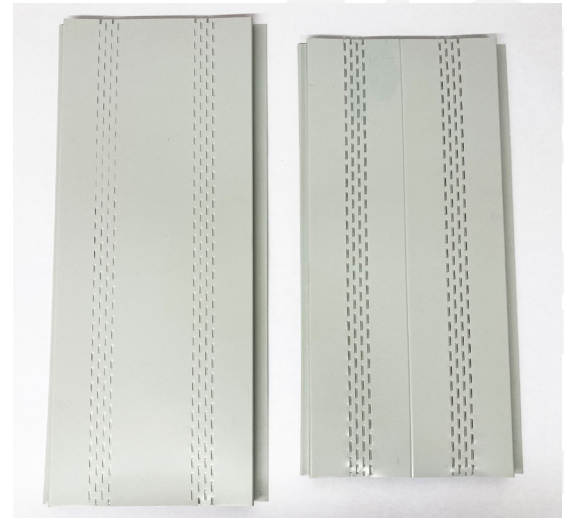
The cladding panel can be installed as a soffit and be equipped with ventilation holes. This Vaillancourt ventilated cladding panel option is made from profiles covering a width of 300 mm.

The ventilation holes are perforated in a series of four rows by an industrial punch that presses the metal sheet into the product to form a slope, thus creating the ventilation holes.

Complies with CAN3-A93-M82: Building Ventilation Vents.

PERFORATION SPECIFICATION

For the specification of ventilation openings, refer to the Vaillancourt SOFFIT data sheet.



MATERIALS

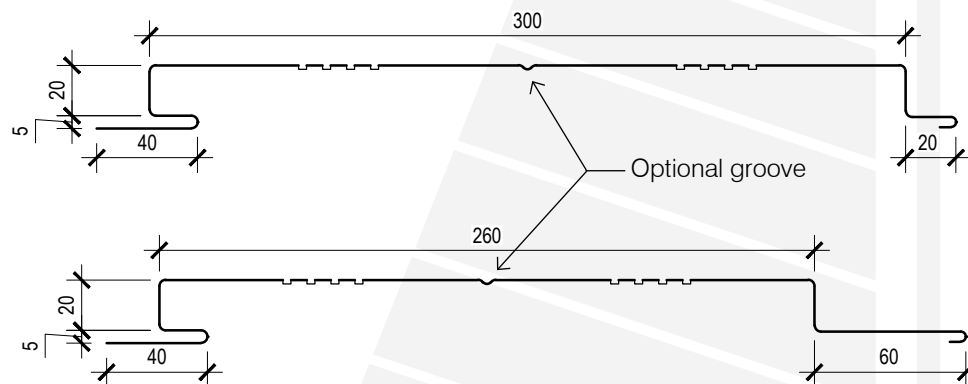
Soffit panel made of:

- Galvanized or Galvalume® or prepainted steel: 24, 25 or 26 gauge

AVAILABLE MODEL

- VAD-300
- VAD-R-300

- VAD-U-260
- VAD-U-R-260



VENTILATION OPENING TABLE	
Panel with two (2) sets of perforations	
Exposed panel width	Percentage of free opening
12 in. (300 mm)	3,72 %